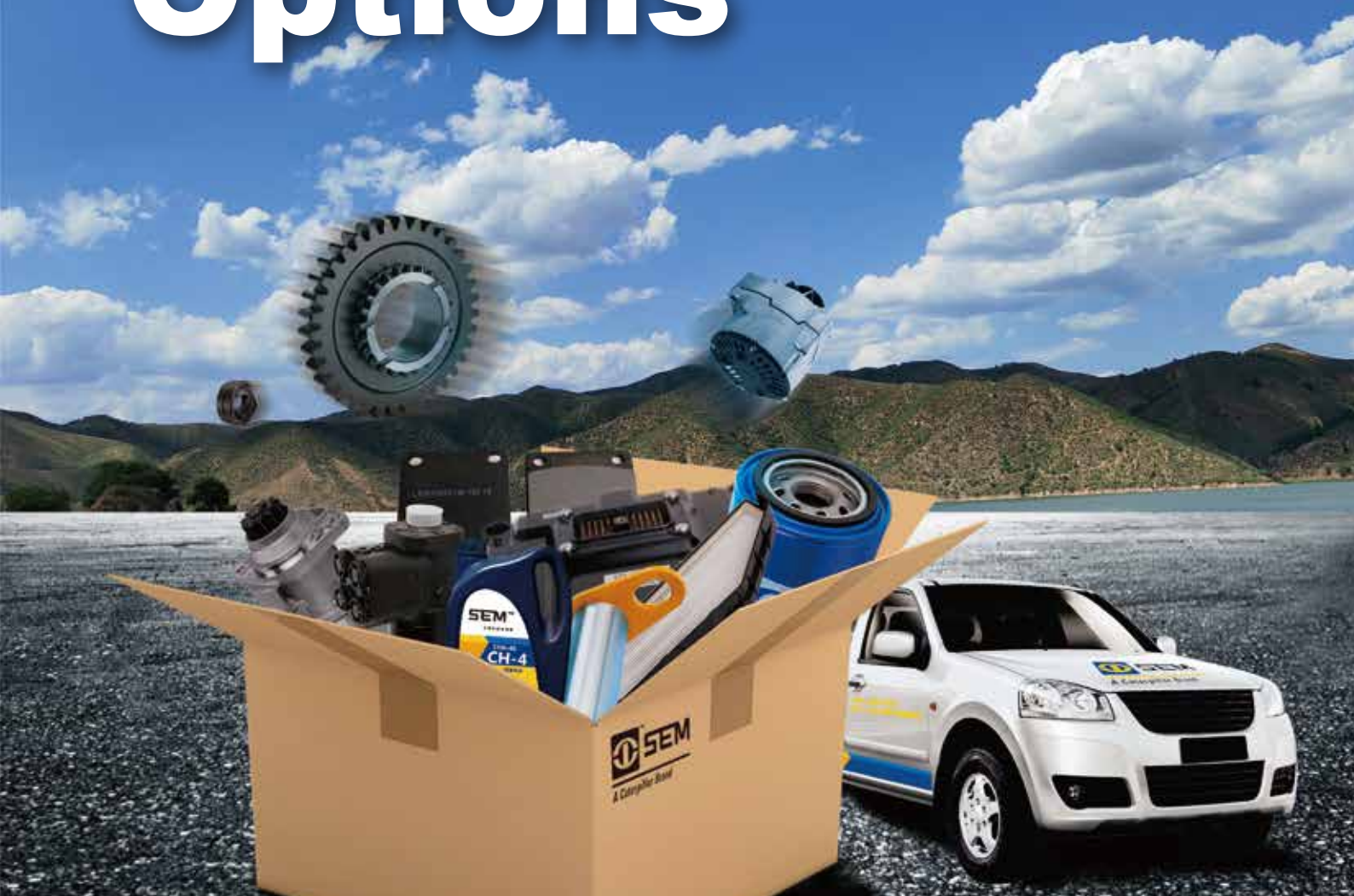
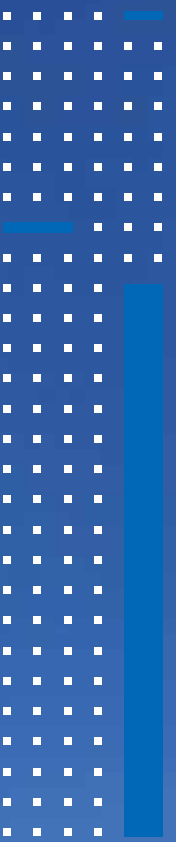


SEMPARTS 
Matched to your needs 

SEM Repair Options





Repair Options is the aftermarket solution for customers, which is offered by SEM dealers.

Brand new parts, component exchange, overhaul and different repair levels, these are regarded as Repair Options.

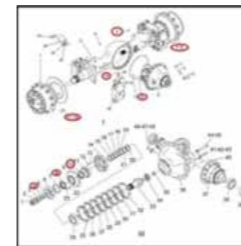
Offer broad range of parts and Repair Options to customers. Those are easy to order with a wide coverage, which could help customers maximize the machine value.

BROAD RANGE OF REPAIR OPTIONS

“I want more than just new and like-new options. I want solutions that match my machine life and price point requirement”



SEM SELECT Parts



Repair Options Kits



Dealer Rebuild

EXPERT ADVICE & REPAIR

“I want someone to work with me to identify my specific repair needs, then help me understand what options are available to meet them”



Dealer Components Exchange



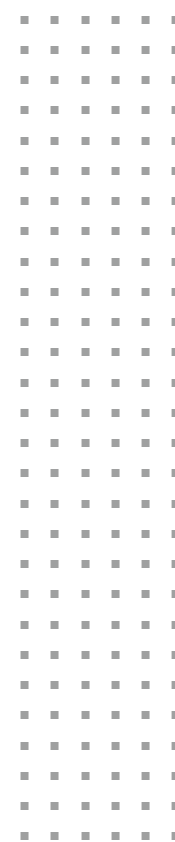
New Components

TIMELY QUOTE & REPAIR

“I want to immediately be advised of price, availability of any alternate parts”

Provide More Service and Parts Solution to Maximize Customer Equipment Value

Repair Level	Level 1 Reseal & Rebearing	Level 2 Reseal & Rebearing Plus	Level 3 Dealer Rebuild	New
Product	Includes bearings, seals, gaskets and normal one-life “wear” parts. Paper or Stock Kits Offering	Includes all Level 1 parts Replaces or Reconditions other critical parts Customer can specify additional parts	Dealer Rebuild, Dealer Exchange Including All Level 1 parts. All multiple-life parts are inspected	New components Replacement Reset Component Hours to Zero
Attributes	Extends life Before Failure 100% New Parts Replacement Lower Cost	Extends Life Before Failure Lower Cost	Before or after failure Immediate availability for exchange	After Failure Immediate availability



Competitive- Broad range of parts solution

- **CONDUCT**
Market analysis and design offering
- **BUILD**
Repair options and dealer capability
- **OFFER**
The Optimal Solution for Each Segment



Predict & plan - Timely quote and repair



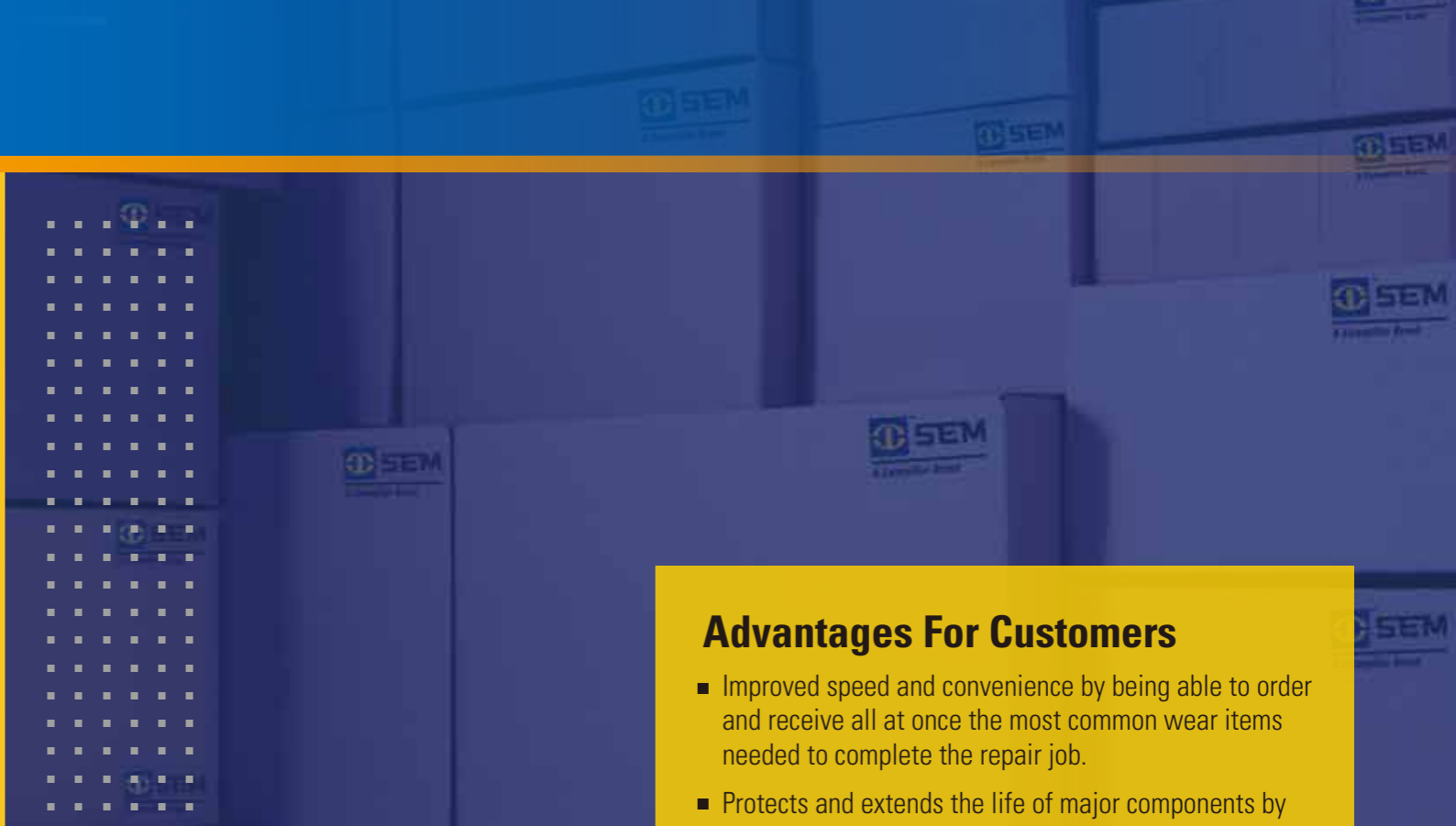
- **PROACTIVELY CAPTURE**
Repair opportunity with inspection and lifecycle data
- **LEAN**
Service process and excellent parts availability
- **SATISFY**
Customer with cost-effective solutions and timely response



Differentiated – expert service and marketing

- **INCREASE**
Customer Interaction through digital channels
- **PROMOTE**
With competitive solution and differentiated marketing
- **ACTIVELY ENGAGE**
With AM CSA customers





Advantages For Customers

- Improved speed and convenience by being able to order and receive all at once the most common wear items needed to complete the repair job.
- Protects and extends the life of major components by replacing inexpensive wear parts.
- Allows you to schedule downtime, and plan for maintenance and repair costs.

Repair Option Classification

Real Kit



It is an orderable and serviceable part number with a HTS code, all China and International customers can place order in DCP or Antares, this kit is much easier to own for customers, such as Seal kit



Paper Kit



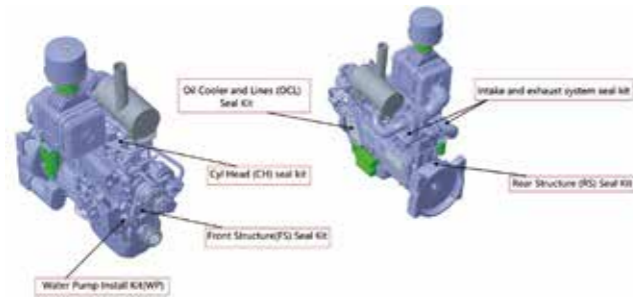
Paper kit is not serviceable, but it is consisting of several individual service parts for repair/service. Dealer should order the sub-level service parts. Detailed sub-level service parts list can be viewed in DCP, such as Repair kit, PM kit, Mid-life repair kit, Overhaul repair kit.

More Repair Options are under development, if you have further questions, please contact your regional Aftermarket Service Representatives.

Engine RO Availability

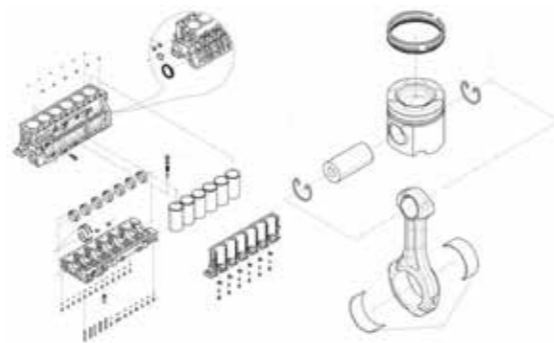
Real Kit:

- Cylinder Head (CH) seal kit
- Front Structure(FS) Seal Kit
- Oil Cooler and Lines (OCL) Seal Kit
- Rear Structure (RS) Seal Kit
- Water Pump Install Kit(WP)
- Intake and exhaust system seal kit
- Crankshaft seal kit
- Cylinder Liner (CL) Seal Kit
- Cylinder block seal kit
- Piston & Liner Repair Kit



Paper Kit:

- LINER
- PISTON
- PIN-PISTON
- RTNR-PIN
- RING-PISTON
- VALVE
- RETAINER
- SPRING
- GUIDE
- INJECTOR GP
- PUSHROD AS
- TAPPET
- ROD GP
- BEARING
- RGLTR AS
- OIL PUMP GP
- SENSOR AS
- TURBOCHARGER
- WATER PUMP GP
- TURBOCHARGER BOLT
- STUD
- CYLINDER HEAD BOLT



Applicable Machine Model: 653D, 655D, 656D, 510, 618D, 636D, 660D, 816D, 822D, 919, 922, 668D, 658D, 659C, 639B

Transmission RO Availability

Real Kit:

- Bearing kits
- Seal kits
- Gasket kits
- Retainer kits



Paper Kit:

- Seals
- Retainers
- Bearings
- Pistons/piston rings
- Sleeves
- Friction Discs
- Springs
- Gears
- Filters/Strainer
- Washers/Gaskets
- Hoses
- Valves
- Brake

Applicable Machine Model: 653D, 655D, 656D, 510, 618D, 636D, 660D, 919, 922, 668D, 658D, 659C, 639B

Torque Converter RO Availability

Real Kit:

- Seal kits
- Gasket kits
- Retainer kits



Paper Kit:

- Seals
- Retainers
- Washers/Gaskets
- Bearings
- Gears
- Sleeves
- Valves
- Turbine/Impeller/Idler

Applicable Machine Model: 653D, 655D, 656D, 510, 618D, 636D, 660D, 919, 922, 668D, 658D, 659C, 639B

Finally Drive RO Availability

Real Kit:

- Seal kits



Applicable Machine Model: 816D, 822D

Paper Kit:

- Seals
- Bearing
- Friction Discs
- Sun gear shaft
- Ring gear/Ring gear support
- Planetary gear/Planetary gear shaft

Axle RO Availability – WL/SCOM

Real Kit:

- Seal kits
- Shim kits
- Retainer kits



Applicable Machine Model: 653D, 655D, 656D, 510, 618D, 636D, 660D, 658D, 659C, 639B

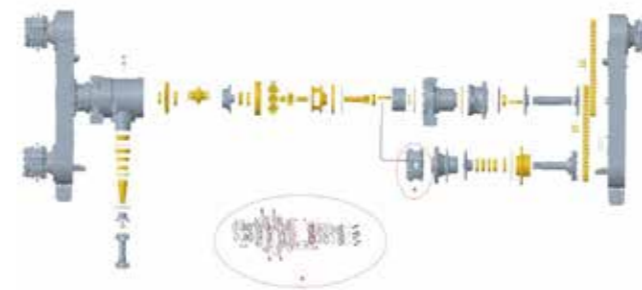
Paper Kit:

- Bearings
- Seals
- Spacers
- Retainers
- Washers/Shims
- Planetary gear shaft/Shaft
- Gears
- Piston
- Brake discs
- Needles
- Nuts-Differential

Axle RO Availability – MG

Real Kit:

- Seal kits
- Shim kits
- Retainer kits



Applicable Machine Model: 919, 922

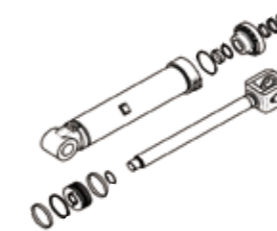
Paper Kit:

- Bearings/ Bearing Rings
- Seals
- Spacers
- Retainers
- Washers/Shims
- Planetary carrier
- Planetary gear shaft
- Gears
- Piston
- Brake discs
- Chain GP
- Differential GP
- Pins

Hydraulic Availability

Real Kit:

- Seal kits



Applicable Machine Model: : 653D, 655D, 656D, 510, 618D, 636D, 660D, 816D, 822D, 919, 922, 668D, 658D, 659C, 639B

Paper Kit:

- Valve Repair Kit
- Pump Repair Kit



SEMPARTS

Matched to your needs



Caterpillar (Qingzhou) Ltd. Address: No. 12999 Nanhuan Road, Qingzhou City, Shandong Province, Zip Code: 262500, P.R.China

© 2023 Caterpillar (Qingzhou) Ltd. All Rights Reserved. 山工机械, SEM, SEM Logo, their respective logos, trade dress as well as corporate and product identity used herein, are trademarks of Caterpillar (Qingzhou) Ltd. and may not be used without permission.

Materials and specifications are subject to change without notice. Featured machines in photos may include optional equipment. Contact your SEM dealer for available options.

Version: September 2023